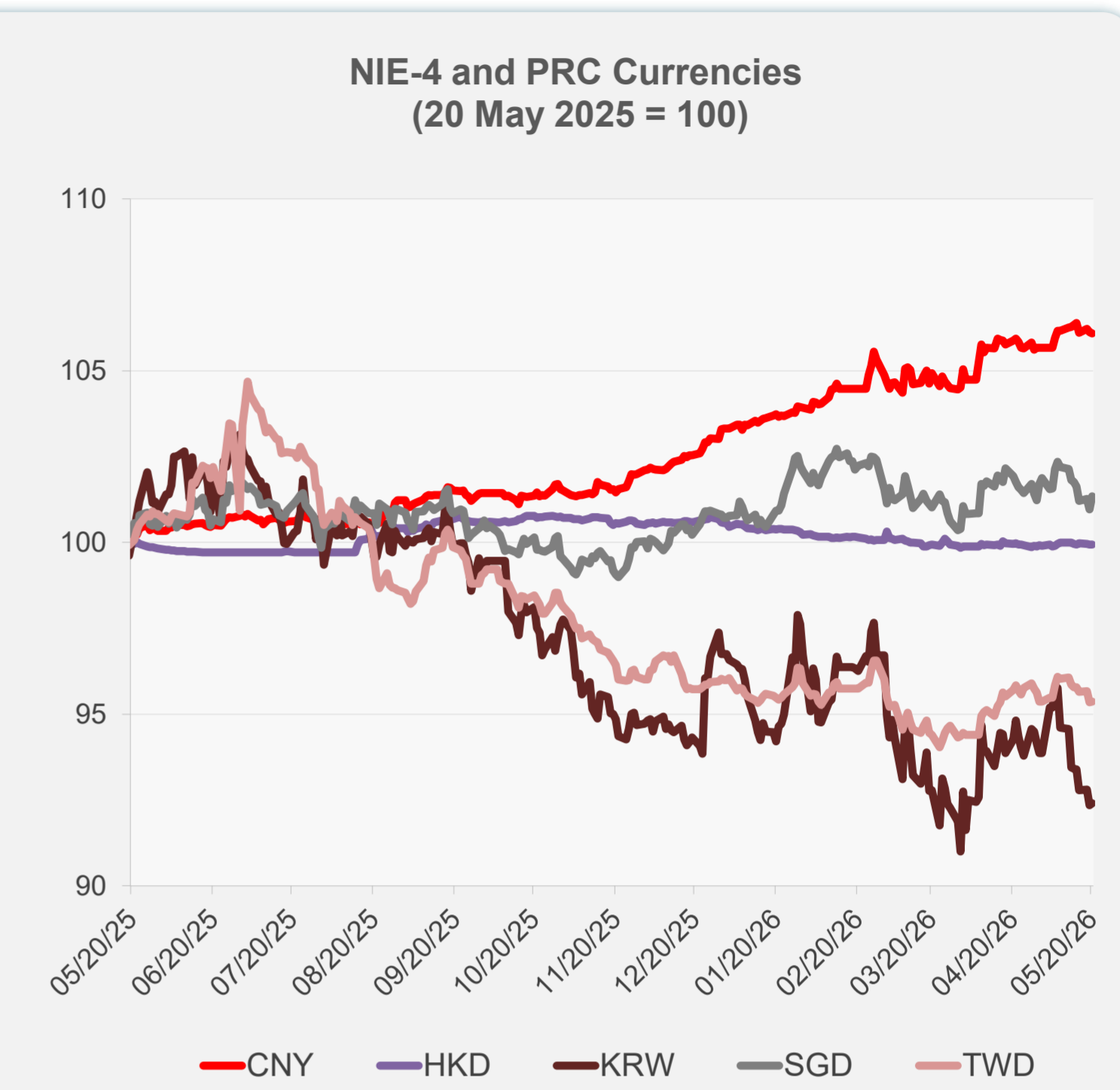
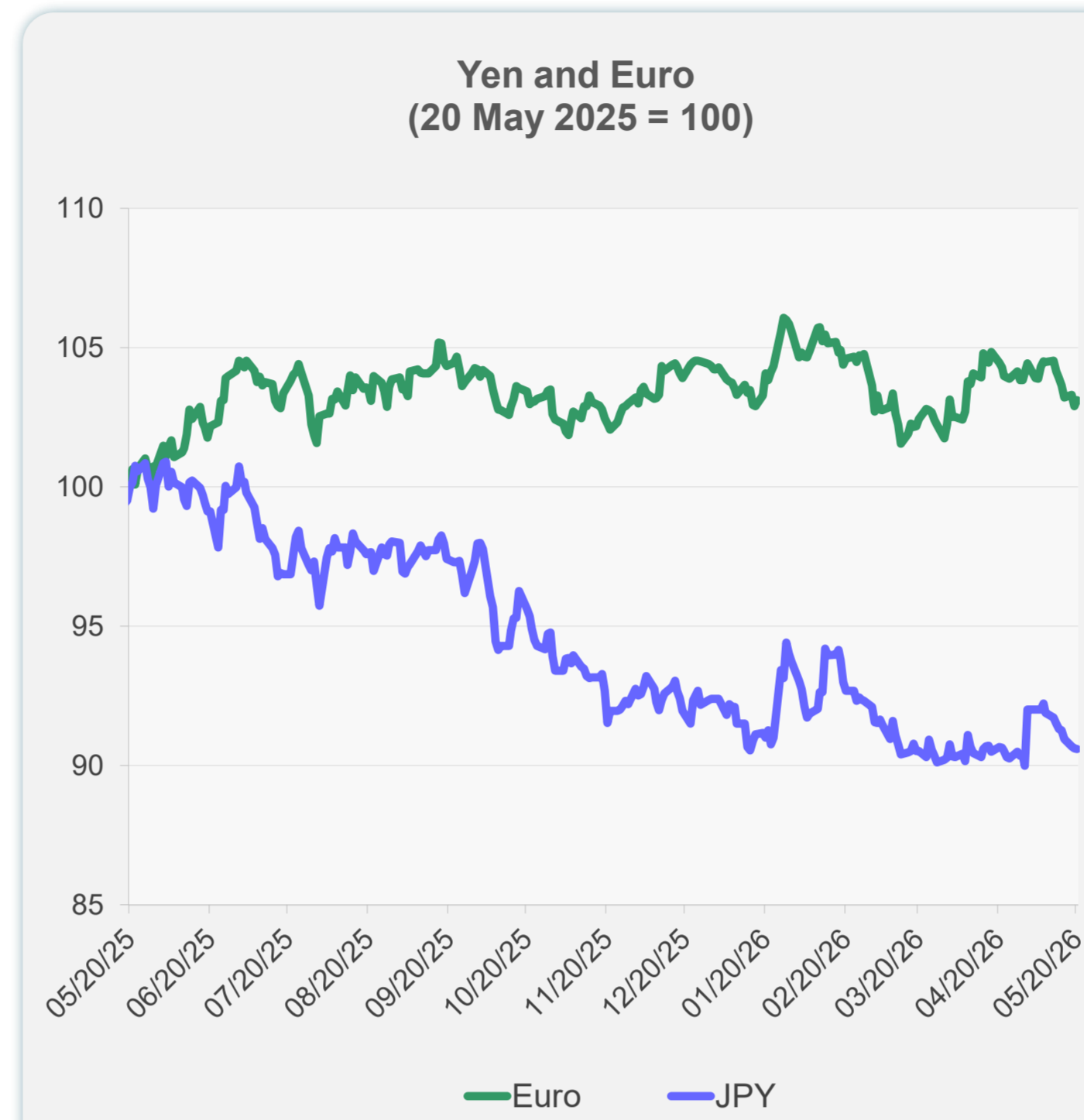
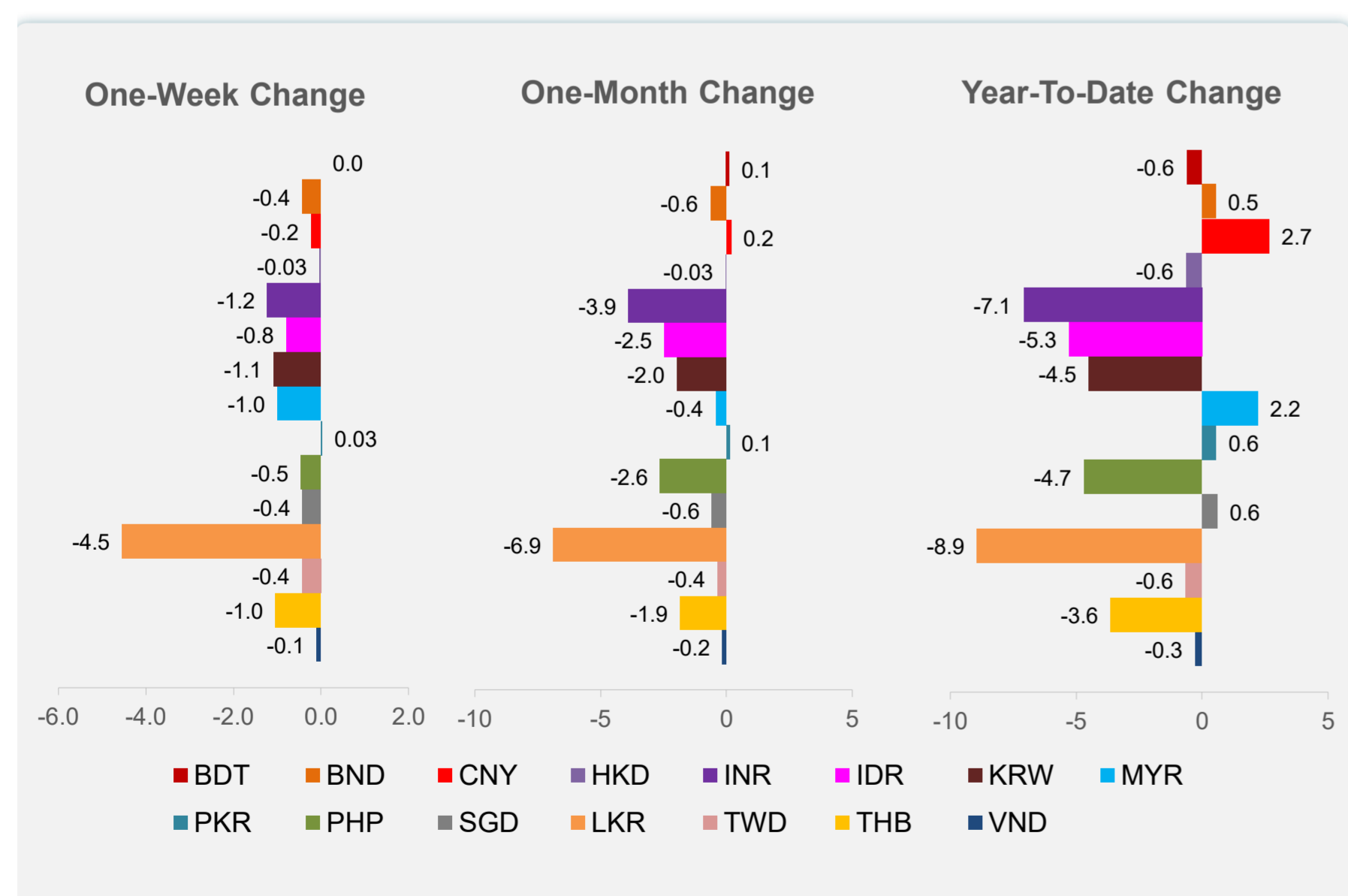
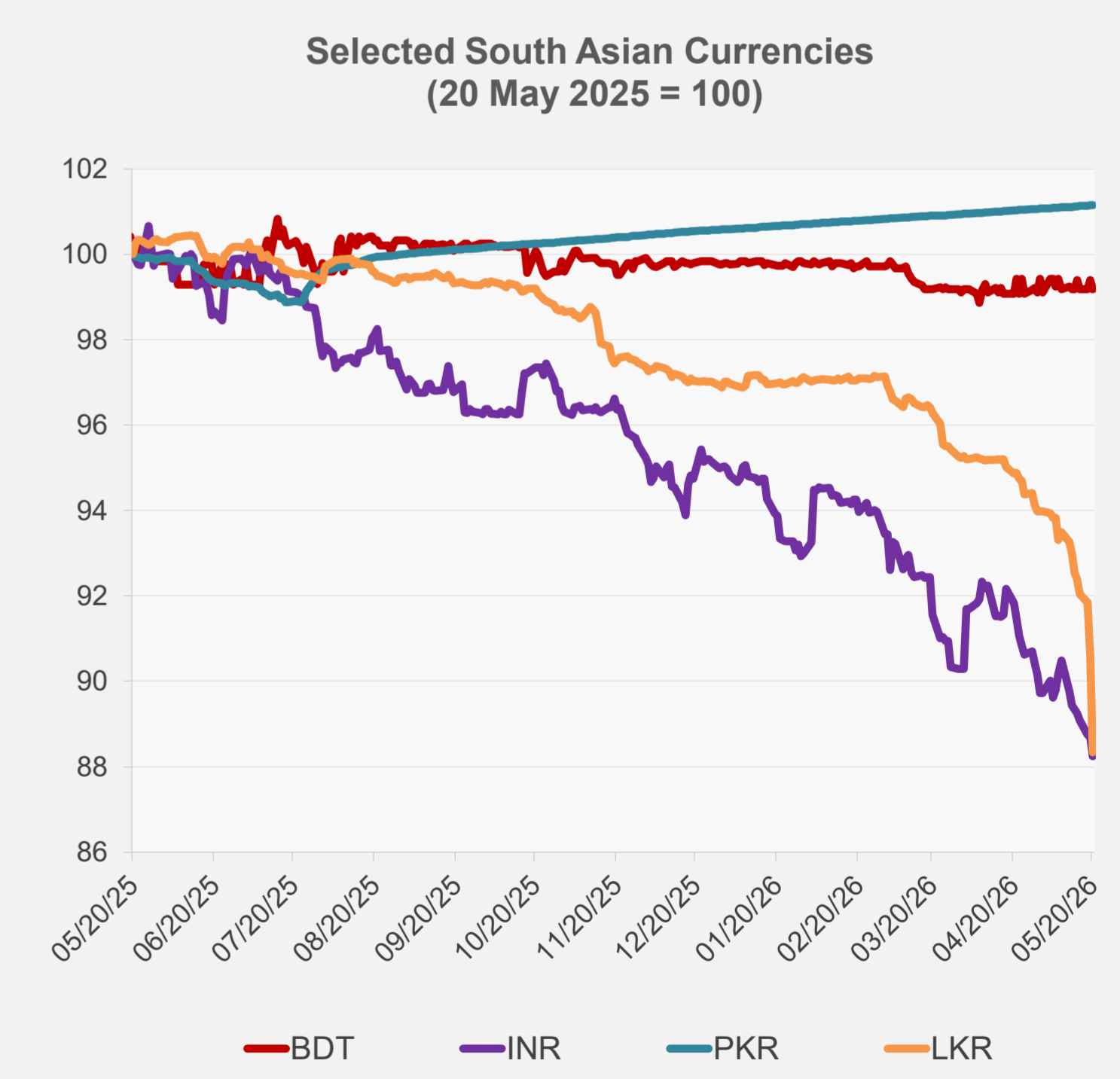
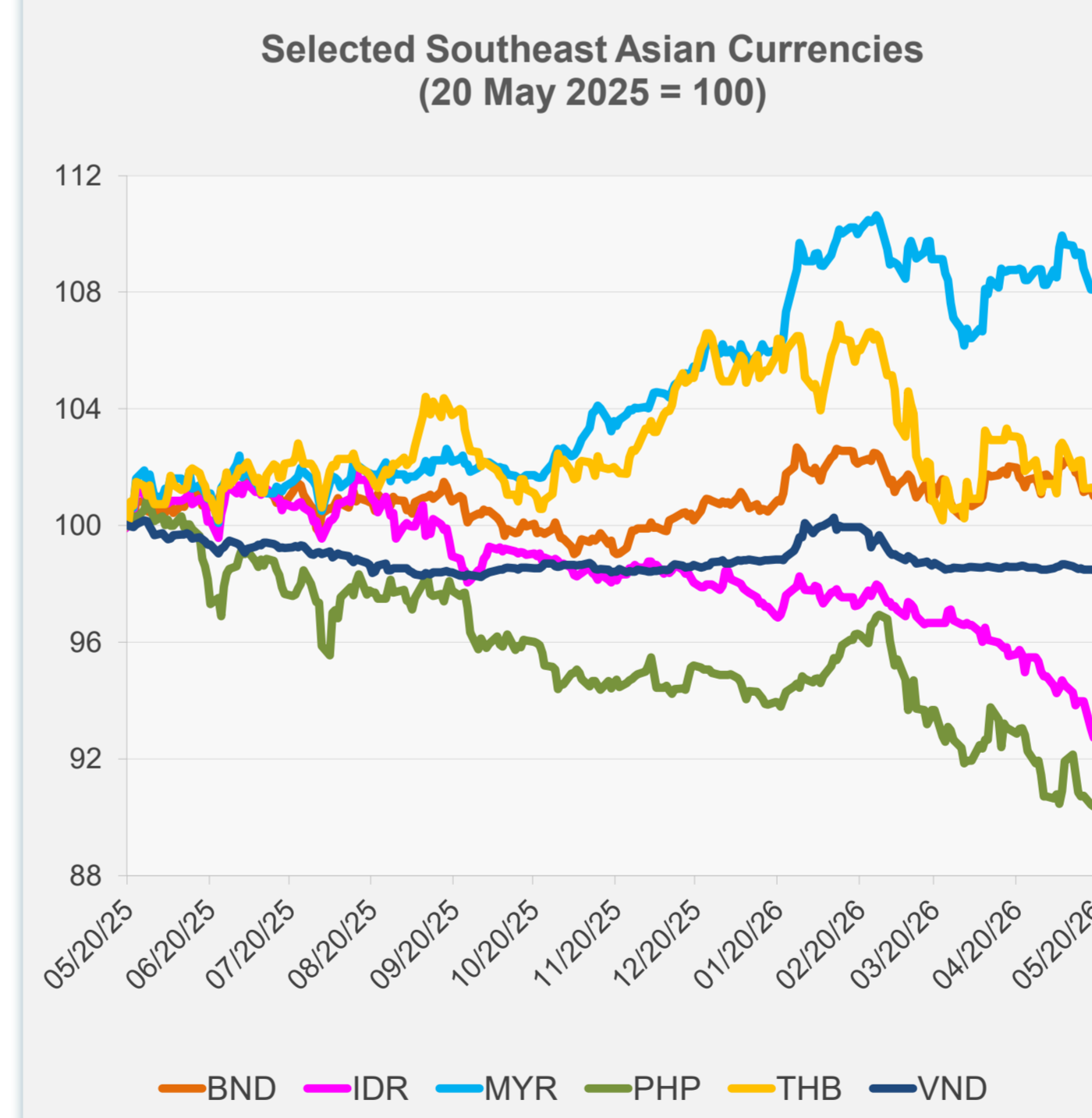


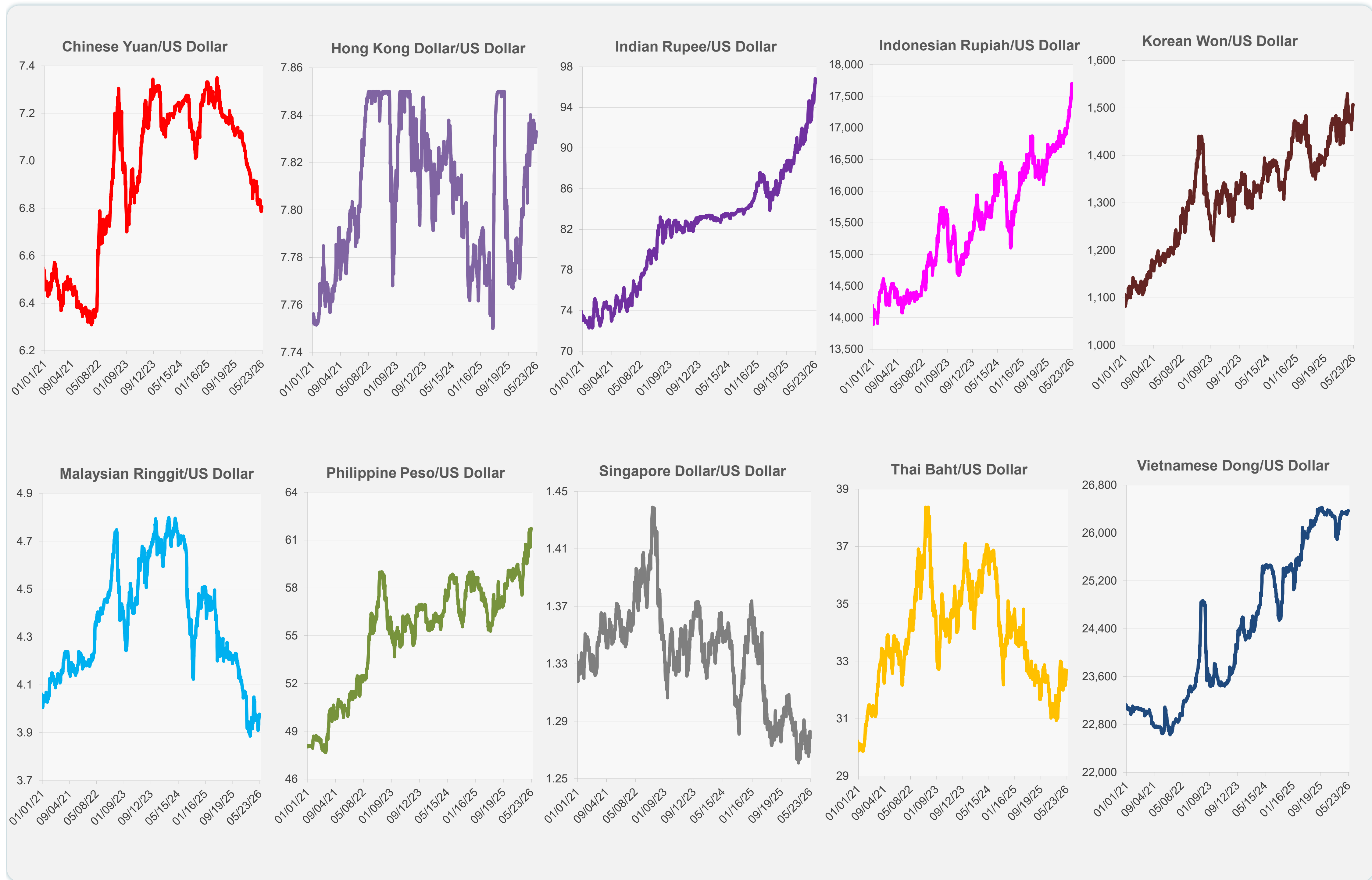
| | Latest Closing | % change from Previous Day | % change from 01-Jan-26 |
|------------------------------|----------------|----------------------------|-------------------------|
| Euro | 0.86 | 0.20 | -1.06 |
| Japanese yen (JPY) | 159.07 | -0.02 | -1.94 |
| Bangladeshi taka (BDT) | 123.00 | -0.20 | -0.61 |
| Brunei dollar (BND) | 1.28 | 0.33 | 0.54 |
| Chinese yuan (CNY) | 6.81 | -0.04 | 2.67 |
| Hong Kong dollar (HKD) | 7.83 | 0.00 | -0.63 |
| Indian rupee (INR) | 96.84 | -0.52 | -7.09 |
| Indonesian rupiah (IDR) | 17,605.00 | 0.54 | -5.28 |
| Korean won (KRW) | 1,506.80 | 0.07 | -4.50 |
| Malaysian ringgit (MYR) | 3.97 | 0.19 | 2.22 |
| Pakistan rupee (PKR) | 278.54 | 0.01 | 0.56 |
| Philippine peso (PHP) | 61.70 | 0.05 | -4.69 |
| Singapore dollar (SGD) | 1.28 | 0.38 | 0.61 |
| Sri Lanka rupee (LKR) | 340.00 | -2.50 | -8.94 |
| Taipei,China NT dollar (TWD) | 31.64 | 0.02 | -0.65 |
| Thai baht (THB) | 32.69 | -0.14 | -3.62 |
| Vietnamese dong (VND) | 26,374.50 | -0.06 | -0.28 |



NIE = Newly Industrialized Economies



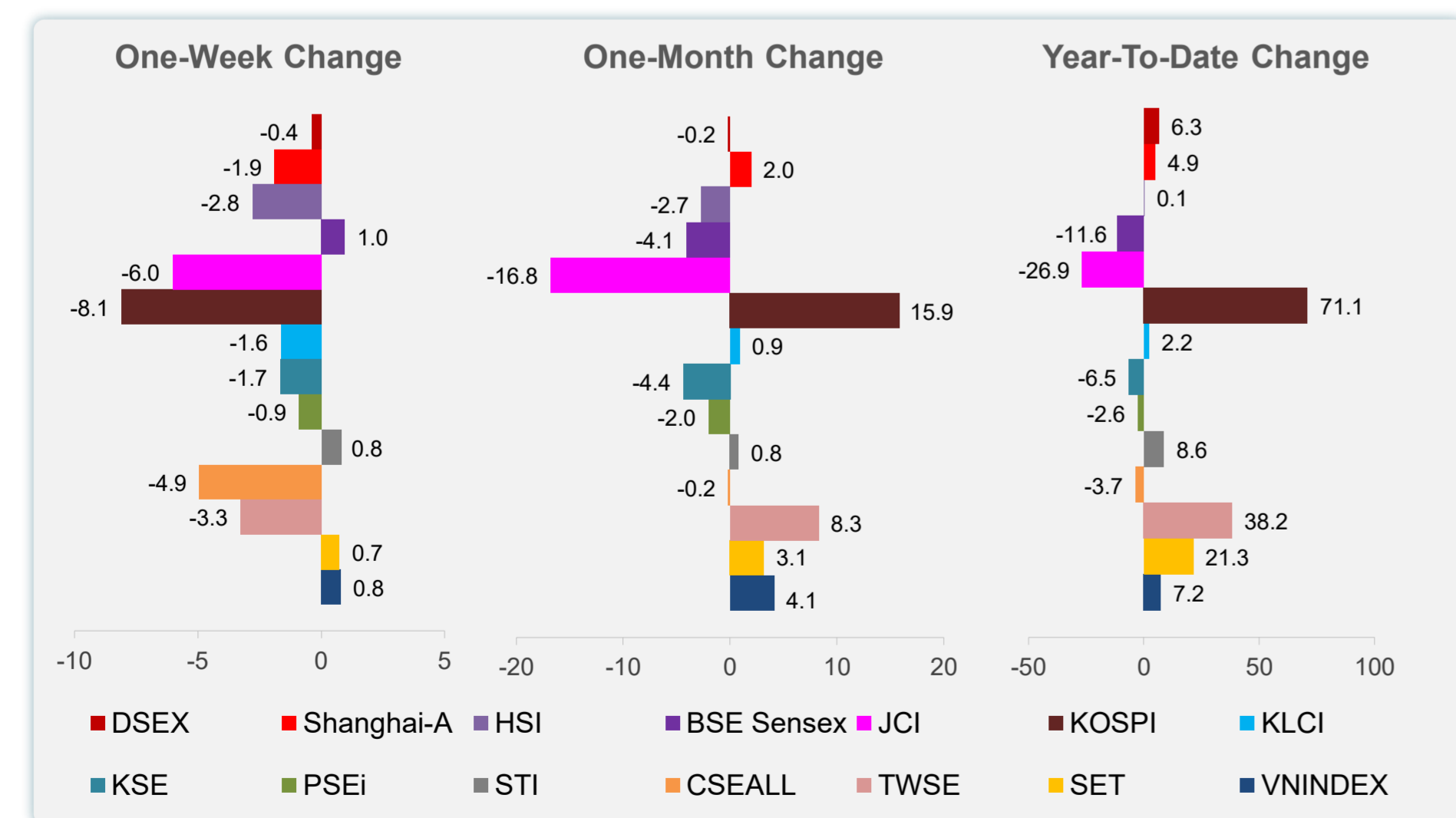
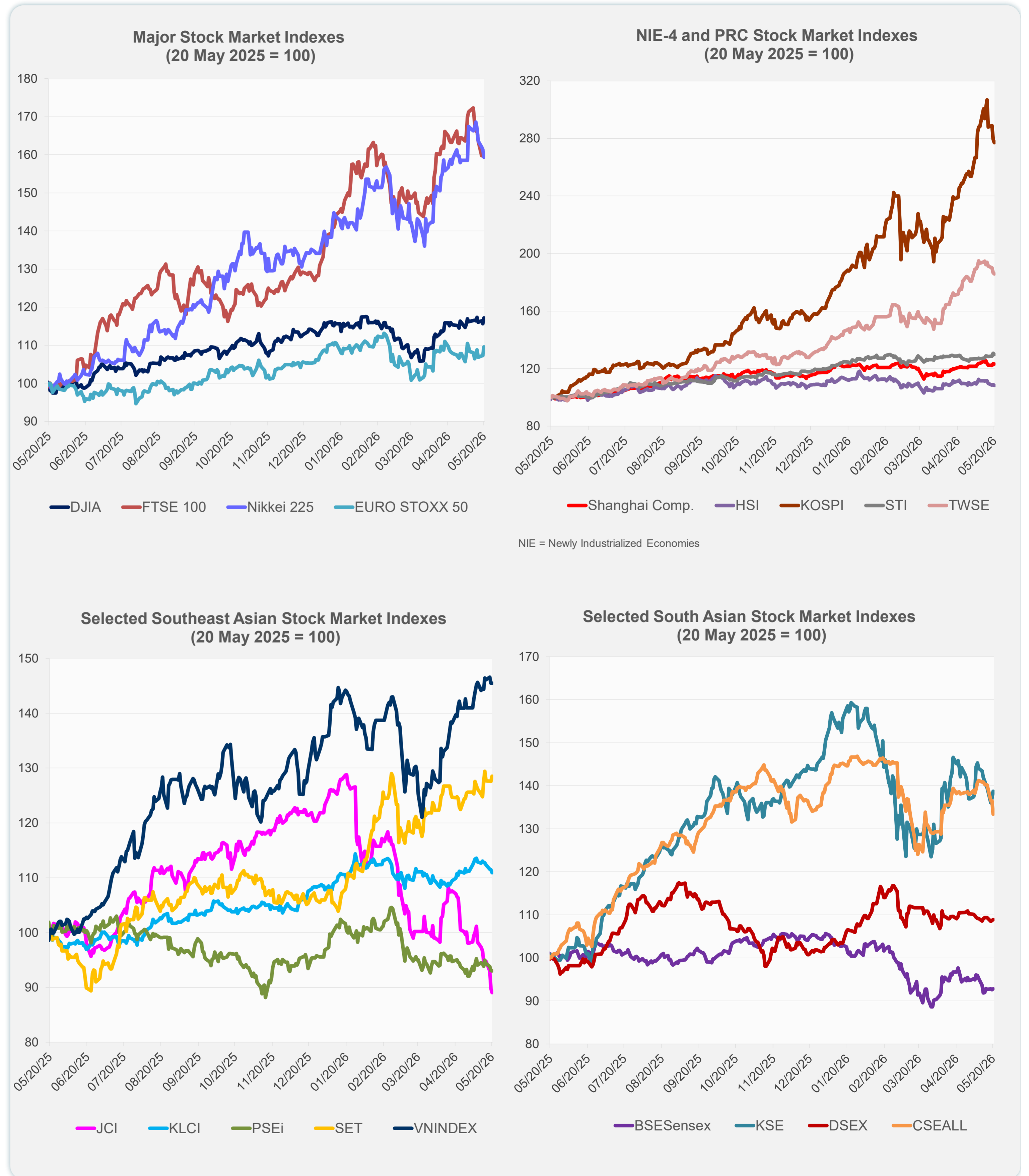
Note: Negative/Decreasing values indicate depreciation of local currency, and positive/increasing values indicate appreciation.
Source: ADB calculations using data from Bloomberg and Haver Analytics.



Source: Haver Analytics.

Daily Market Watch
STOCK INDEXES

| | Latest Closing | % change from Previous Day | % change from 01-Jan-26 |
|----------------------|----------------|----------------------------|-------------------------|
| US Dow Jones Ind Avg | 50,009.35 | 1.31 | 4.05 |
| US NASDAQ | 26,270.36 | 1.54 | 13.03 |
| US S&P 500 | 7,432.97 | 1.08 | 8.58 |
| UK FTSE 100 | 14,012.01 | -0.12 | 24.42 |
| EURO STOXX 50 | 5,976.07 | 2.13 | 3.19 |
| Japan NIKKEI 225 | 59,804.41 | -1.23 | 18.80 |
| Bangladesh DSEX | 5,222.38 | 0.21 | 6.35 |
| PRC Shanghai Comp. | 4,162.18 | -0.18 | 4.87 |
| Hong Kong, China HSI | 25,651.12 | -0.57 | 0.08 |
| India BSE Sensex | 75,318.39 | 0.16 | -11.59 |
| Indonesia JCI | 6,318.50 | -0.82 | -26.93 |
| Korea, Rep. of KOSPI | 7,208.95 | -0.86 | 71.06 |
| Malaysia KLCI | 1,717.69 | -0.51 | 2.24 |
| Pakistan KSE 100 | 165,027.10 | 1.17 | -6.49 |
| Philippines PSEi | 5,893.40 | -0.06 | -2.64 |
| Singapore STI | 5,044.91 | -0.54 | 8.58 |
| Sri Lanka CSEALL | 21,789.05 | -2.28 | -3.69 |
| Taipei, China TWSE | 40,020.82 | -0.39 | 38.18 |
| Thailand SET | 1,528.43 | 0.77 | 21.34 |
| Viet Nam VNINDEX | 1,913.23 | 0.02 | 7.21 |



Sources: ADB calculations using data from Bloomberg and CEIC Data Company.

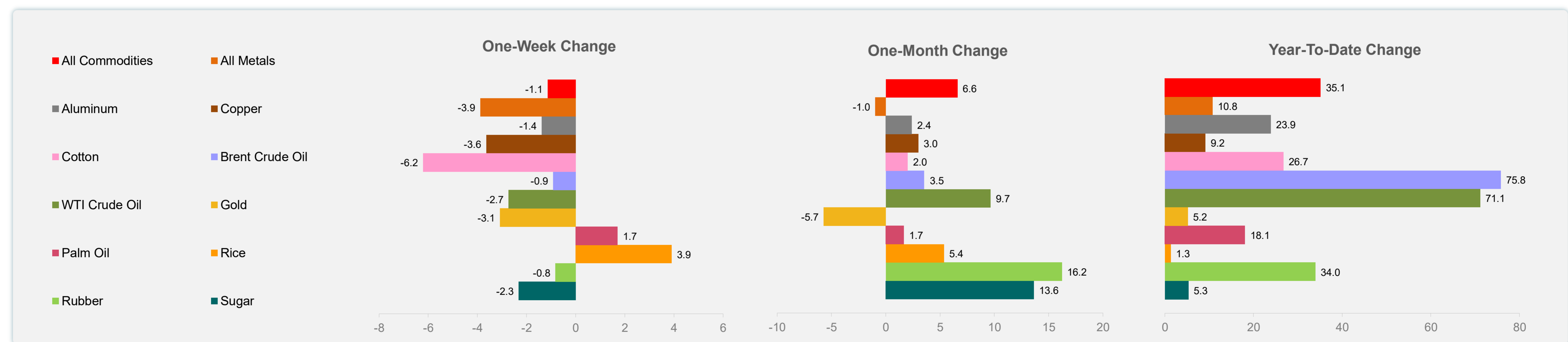
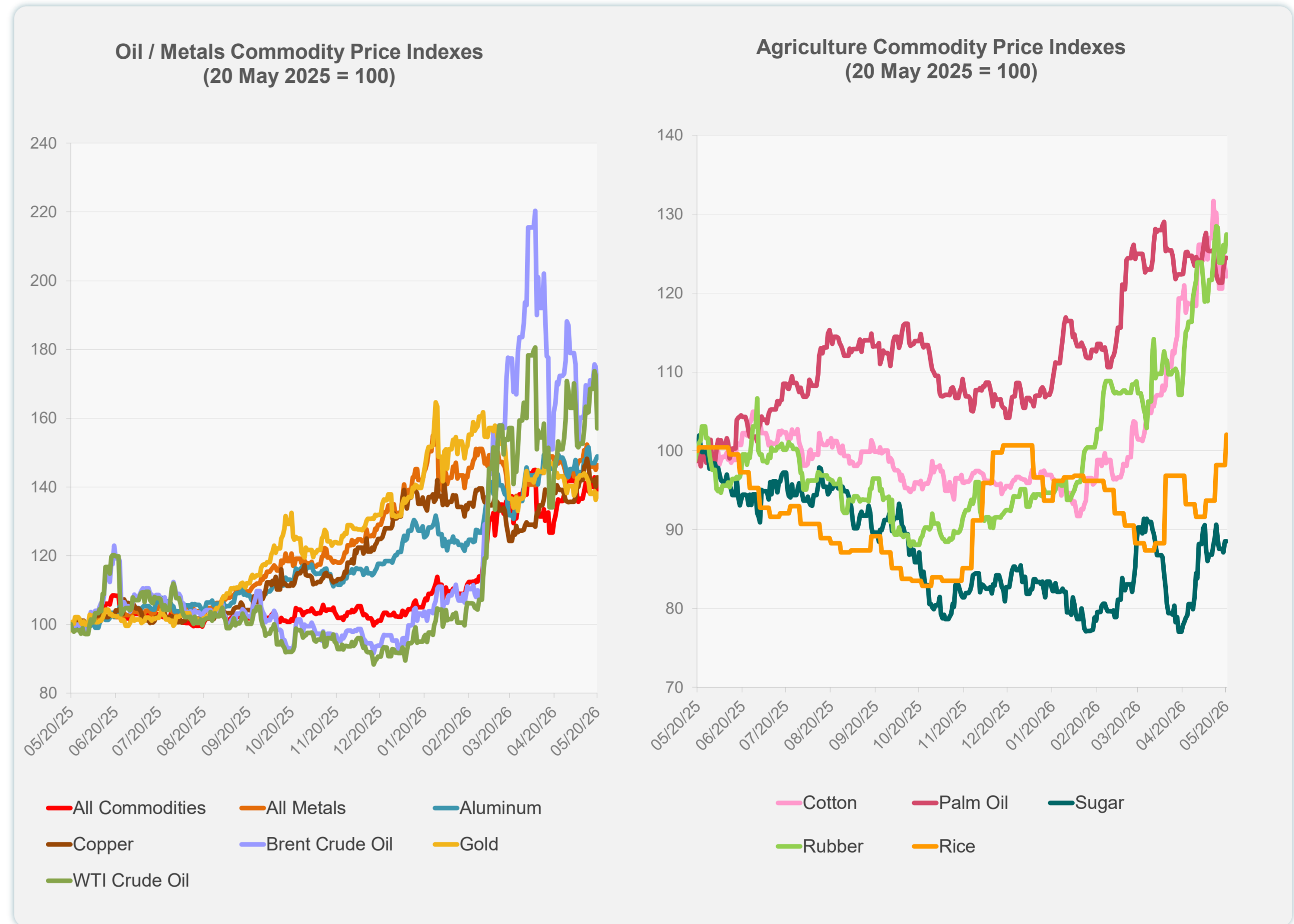


Sources: ADB calculations using data from Bloomberg and CEIC Data Company.

Daily Market Watch
COMMODITY PRICES

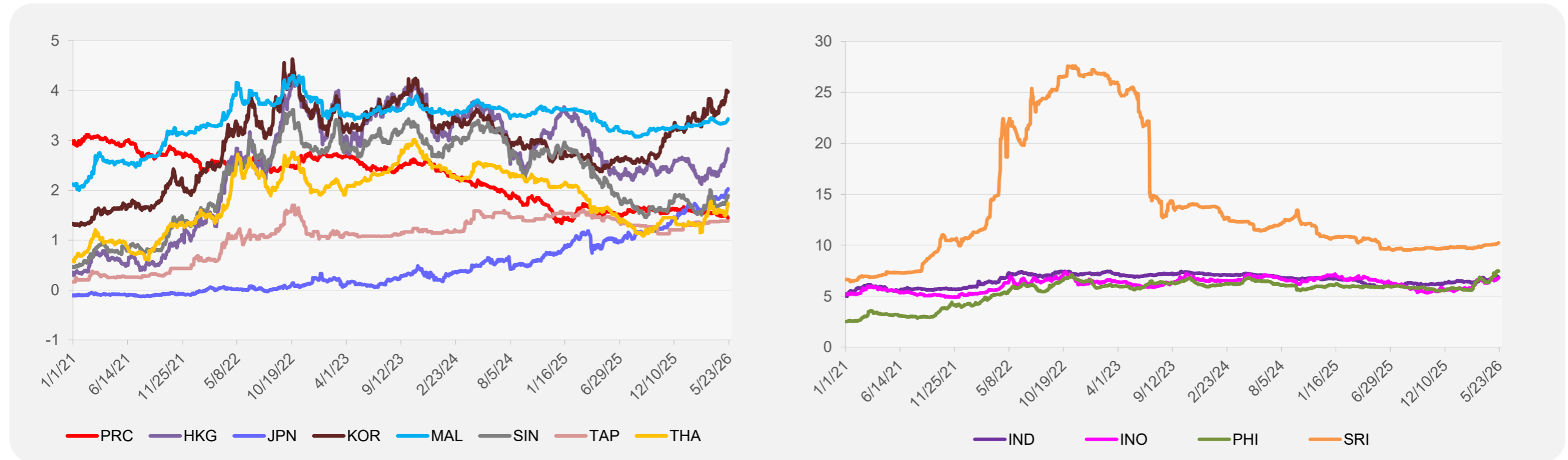
| | Unit | Latest Closing | % change from Previous Day | % change from 01-Jan-26 |
|---------------------|-------------------|----------------|----------------------------|-------------------------|
| S&P All Commodities | US\$ | 741.20 | -2.88 | 35.13 |
| S&P All Metals | US\$ | 491.47 | 0.98 | 10.75 |
| Aluminum | US\$/metric ton | 3,677.06 | 0.67 | 23.89 |
| Copper | US\$/metric ton | 13,595.63 | 1.96 | 9.17 |
| Cotton | US cents/lb | 78.60 | -0.92 | 26.73 |
| Brent Crude Oil | US\$/barrel | 109.76 | -4.28 | 75.77 |
| WTI Crude Oil | US\$/barrel | 98.26 | -8.82 | 71.13 |
| Gold | US\$/troy oz | 4,544.19 | 1.37 | 5.20 |
| Palm Oil | US\$/metric tonne | 1,143.72 | 0.18 | 18.07 |
| Rice ¹ | US\$/metric ton | 452.00 | 3.91 | 1.35 |
| Rubber ² | US\$/kg | 288.00 | 1.77 | 33.95 |
| Sugar | US cents/lb | 15.58 | 0.00 | 5.34 |

¹ Latest closing price from 13 May 2026.
² Singapore Exchange, Ribbed Smoked Sheet Rubber.

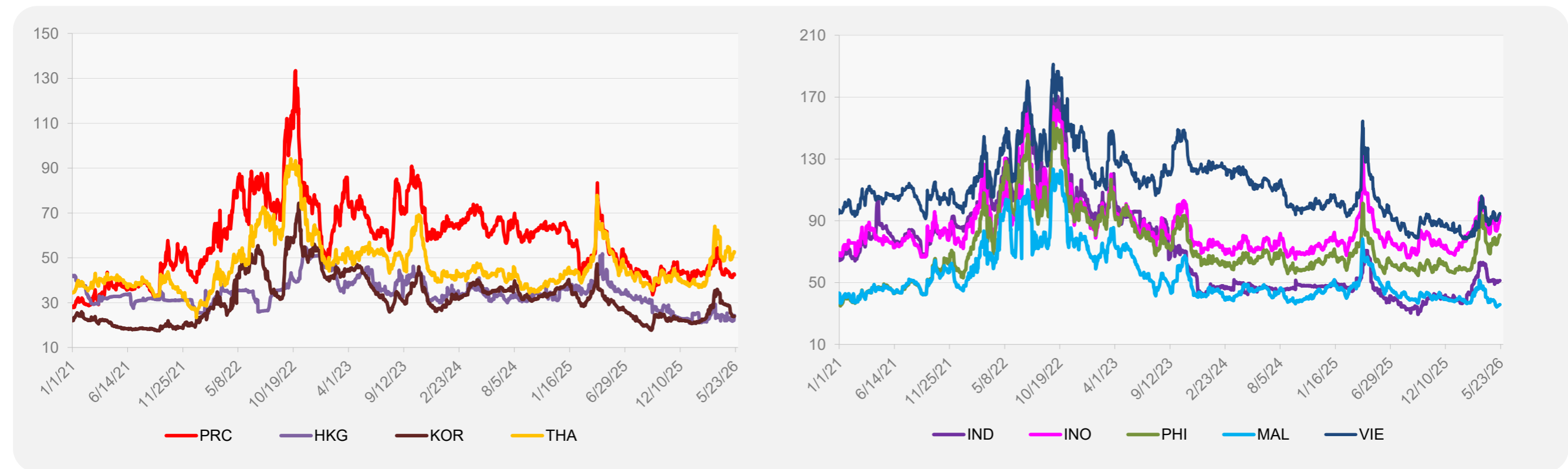


Source: ADB calculations using data from Bloomberg.

5-YEAR LOCAL CURRENCY GOVERNMENT BOND YIELDS (%)



5-YEAR CREDIT DEFAULT SWAP¹



¹ In USD and based on sovereign bonds.
Source: ADB calculations using data from Bloomberg.